

Remote Access Sensors

Quickly and easily inspect enclosed or hard-to-reach bearings with UE Systems' permanent mounted Remote Access Sensors

When accessibility is an issue, such as when a motor is contained within a closed cabinet, or a test point is in a hard-to-reach area, the RAS is the answer.

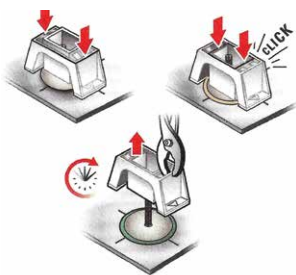
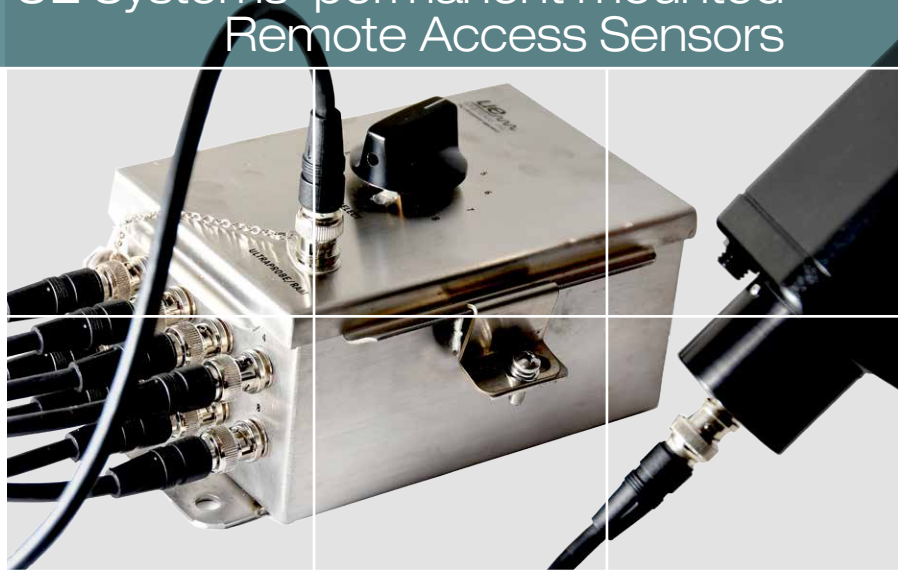
Mount the Remote Access Sensor on the test point and run a cable to an access area where a RAM (Remote Access Module) can be connected. When the point is to be tested, plug the RAM into your Ultraprobe and take your reading.

Installation is very simple and testing is really easy!

Just mount the RAS transducer on your test subject, attach a BNC cable, run the cable through an access hole.

Now, every time you come by, just plug it into your Ultraprobe 9000, 10.000, 15.000 or 401, record your data and move on.

If you have multiple bearings on hard-to-reach areas, you can even make use of UE Systems' Switch Boxes which will allow to test up to 8 bearings at once!



Step 1 - Mount the sensors with included mounting studs



Step 2 - Connect the sensors to the switch box



Step 3 - Connect an Ultraprobe to the box



Step 4 - Switch through the points and take your reading

How to Install:

- Use the included Click-Bond Mounting Stud Kit which comes with a solvent wipe, an acrylic adhesive and 2 x Click Bond units which will allow you to easily glue the stud to the testing point.
- Then simply thread the RAS onto the stud and connect the cables.
- One end of the BNC-to-BNC cable connects to the RAS and the other end goes into a Remote Access Module (RAM).

We have standard cables with different lengths and these can even have customized lengths when needed.

- When you need to test, just plug your Ultraprobe into the RAM and perform your inspection as usual.

Optionally you can make use of a Switch Box. Run multiple BNC-to-BNC cables into the switch box and a splitter will lead them to one cable only. Attach the RAM to this cable, plug your Ultraprobe to the RAM and inspect 4 to 8 test points simply by switching from one channel to the other.

What you will need:

UE RAM

Adaptor enabling the Ultraprobe 9.000, 10.000 or 15.000 to read data from the RAS. RAM is included with the Ultraprobe 10.000 and 15.000.

BNC-to-BNC Cable

To establish a connection between the Remote Access Sensor and the Remote Access Module.

Available in the following standard dimensions:

- 3 feet / 0.9 meters
- 4 feet / 1.2 meters
- 15 feet / 4.5 meters
- 25 feet / 7.6 meters
- 50 feet / 15.2 meters
- 75 feet / 22.8 meters

UE Systems might also create customized cables with different dimensions than the standard ones, at request.

Click-Bond Mounting Stud Kit

Mounting kit to permanently attach the RAS to the test point.

The Kit includes:

- Abrade tool
- CB911 Solvent Wipe – removes oil, grease wax and dirt from the surface to be adhesive bonded
- CB 200 Acrylic Adhesive
- Wooden stick to apply adhesive
- 1 x Click Bond piece
- Mounting Instructions

UE RAS Switch Box

When access or safety make it challenging to inspect a test point, the RAS Switchbox is your answer, making remote sensing quick, easy and safe.

Connect and test single or multiple points remotely.

Permanently mount a RAS to a test point and run a coax cable to the UE RAS Switch box. Once connected, you may test up to 8 test points at a time. To test, attach a RAM (Remote Access Module) to the Switchbox, select a test point indicator and collect your data. It's that easy!

The UE Switchbox can be used with the Ultraprobe 9.000, 10.000, 15.000 and 401.



UE RAS Specifications

Transducer	Piezoelectric, stainless steel housing with female BNC connector
Dimensions	Dia. 1.0" (2.54 cm) Length: 2.4"(6.1 cm)
Thread	(female) 10/32
Cable	BNC connector, 25 ft (7.6 m) standard. Can be ordered up to 50 ft. (15.2 m)
Preamp	Electronics are designed to interface with Ultraprobe 9000, 10,000, 15,000 and 401 models only
Frequency Response	20 kHz – 100kHz
Operating Temp.	32° – 140°F (0° – 60° C)

UE RAS Switch Box Specifications

Dimensions	Height = 4.250 inches (107mm), Weight = 3.05 lbs (1.38 kg)
Material	16 gauge, 304 stainless steel
IP Rating	IP65
Electrical Connections	BNC
Inputs	4 to 8 RAS Sensors, Switchable
Output	Single RAM Output Connection
Electrical Mounting Isolators	Included



www.uesystems.com

UE Systems Inc. • 14 Hayes St. • Elmsford, New York • USA 10523

T: +1 914 592 1220 • E: info@uesystems.com • www.uesystems.com